



Concept Statement

Here at the NEXT Hub, we welcome students from all walks and stages of life. We believe it's never too late for you take advantage of educational opportunities that **lay the groundwork** to help you **climb higher** both professionally and personally.

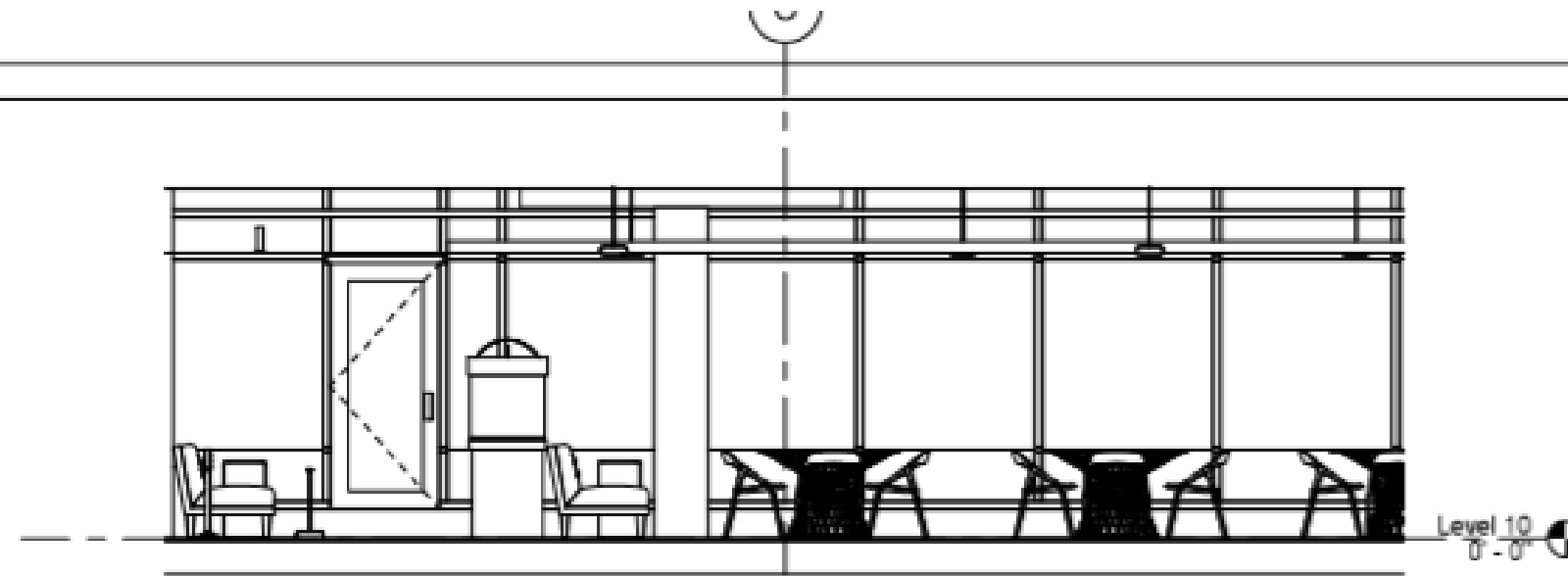
NEXT Hub offers a variety of learning environments and flexible classroom settings to appeal to a wide variety of users, because there is no such thing as a 'typical college student' anymore.

At NEXT Hub, hourly childcare and a Mother's room will be instrumental in balancing school responsibilities with the demands of family. Most **women** put off going back to school and reentering the workforce because of small children at home but with the option in the same building, they can attend class with a renewed focus.

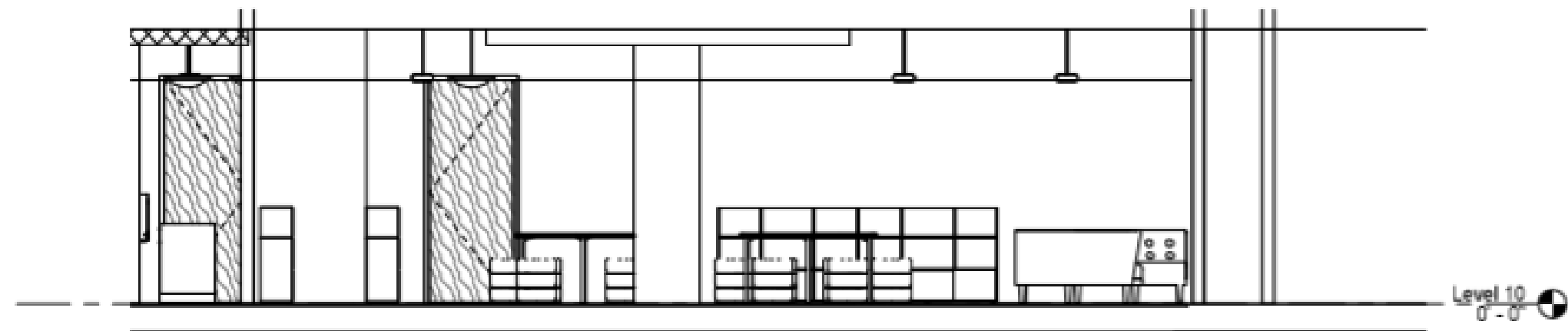
Our **sensory alignment room** is a unique option within the university. It **aids in calming the daily stresses that can overwhelm any student** and studies show a wide variety of people could benefit. For example, the number of people who identify as being on the **autism** spectrum is ever increasing, and while educational opportunities for this population are limited, at NEXT Hub, they can feel secure that both educational and emotional needs can be met. It is also at the disposal of our childcare workers should they need it to try and **calm an upset minor**, whether they are on the spectrum or not. But for parents of special needs kids who are students, knowing this option is there for their child will be instrumental in keeping their mind on the classwork.

PTSD is a real reality for veterans and other victims of trauma but in the sensory alignment room, students can get re-centered and deal with the turmoil that is trying to distract from the learning environment.





① INBETWEEN SPACE & LEARNING
COMMONS
1/4" = 1'-0"



② CHILDCARE CENTER
1/4" = 1'-0"



www.autodesk.com/revit

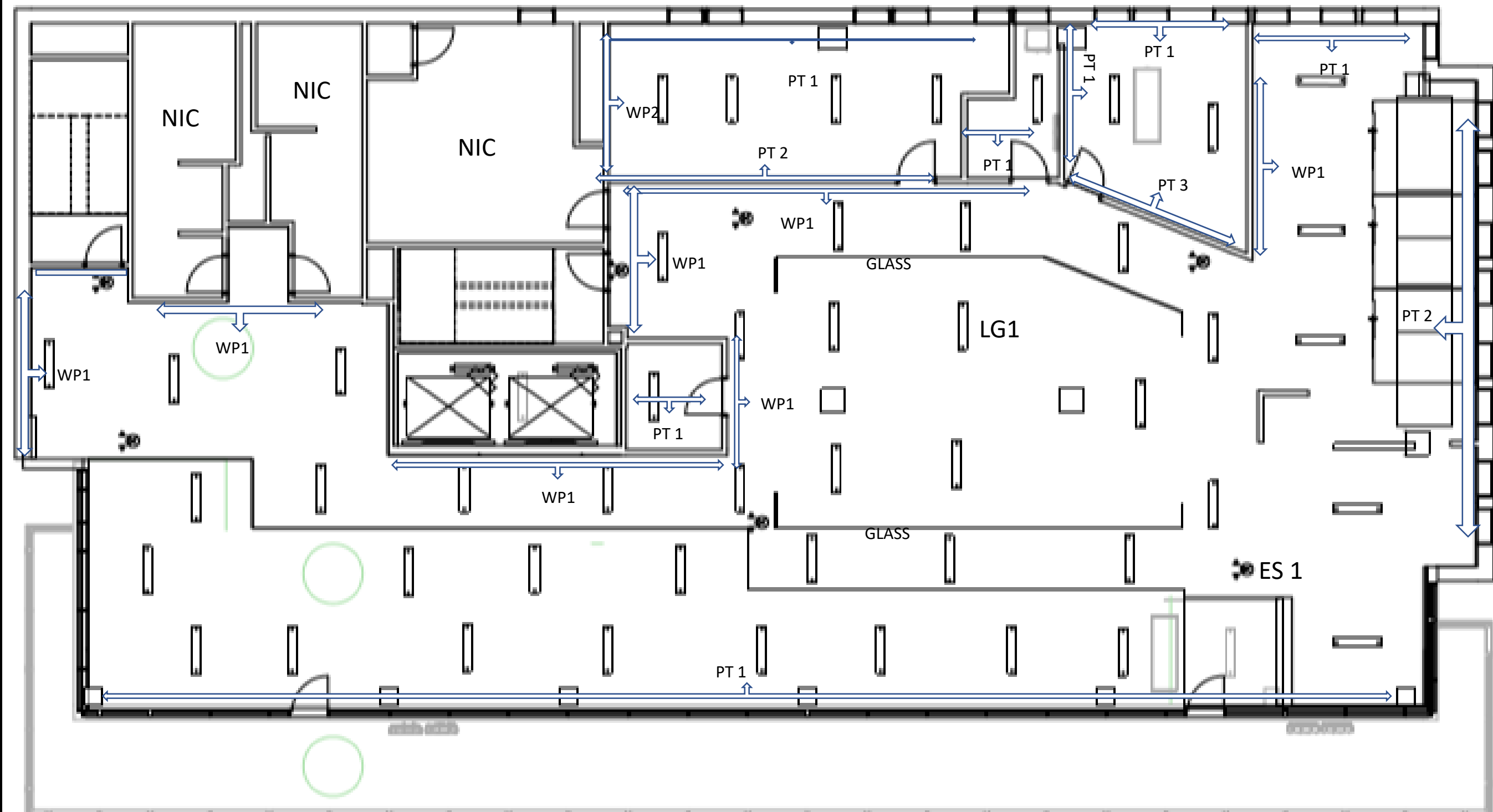
ELEVATIONS

No.	Description	Date

ELEVATIONS

Project number	Project Number	A114
Date	Issue Date	
Drawn by	Author	
Checked by	Checker	
Scale: 1/4" = 1'-0"		

1/30/2020 2:17:38 PM



www.autodesk.com/revit

Reflected Ceiling Plan

No.	Description	Date

Unnamed

Project number	Project Number
Date	Issue Date
Drawn by	Author
Checked by	Checker

A106

Scale: 1/8" = 1'-0"



LIGHTING AND EXIT SIGNAGE

Item # 1035264 Model # LF1188-NK7-48LF4-G
Good Earth Lighting Manhattan 48-in Nickel Transitional LED Flush Mount Light ENERGY STAR

87 Ratings

★★★★★

4.7 Average

96%

Recommend this product

Community Q&A

View Now



LG 1



ES 1

UL Listed

This item has been tested and meets safety standards imposed by the Underwriters Laboratories (UL).

LED Lighting

This unit uses energy efficient and long lasting LED's.

- FEATURES
- UL 924, NEC, OSHA and NFPA 101 Life SafetyCode
 - Listed for damp location
 - Most versatile edge lit exit sign on the market
 - Wall, sloped, high, or standard ceiling and recessed mount available
 - Aluminum housing with high grade acrylic face
 - Field Installable Arrows for Left, Right or Both directions.
 - Long life LED illumination
 - Test switch and charge rate indicator on battery backup models
 - Dual 120/277 volt operation
 - Please allow 3-5 days for black or white finishes - Call for rush orders
 - NON CEC Compliant

SPECIFICATIONS

Dimensions	
Width	12"
Height	9.75"
Depth	1.75"
Weight	5.00 lb

WALL & FLOOR FINISHES

<Room finishes>			
A	B	C	D
Name	Floor Finish	Wall Finish	Ceiling Finish
learningcommons	lvp1	wp1, pt2	pt1
mothersroom	lvp1	pt1	pt1
childcare	lvp1	pt2, wp2	pt1
immersivellearnign	lvp1	pt1	pt1
locker/copyresour	lvp1	wp1	pt1
computer Lab	cpt1	pt1	pt1
locker/copy resour	cpt1	wp1	pt1
wildcard space	lvp1	p3	pt1
makerspace	lvp1	glass	pt1
in between space	lvp1	wp1	pt1
small seminar clas	cpt1	pt2	pt1
active learning cla	cpt1	pt2 wp1	pt1
inbetween space	lvp1	wp1	pt1
small seminar 2	cpt1	pt2	pt1
inbetween space	cpt1	wp1	pt1
facutly hub/private	lvp1	pt2, wp1	pt1
tutoring	lvp1	pt2	pt1
lg multipurpose cla	cpt1	pt1	pt1
tutoring	cpt1	pt2	pt1
inbetweenspace	cpt1	wp1	pt1
inbetween space	cpt1	wp1	pt1

All wallpaper is by Designtex



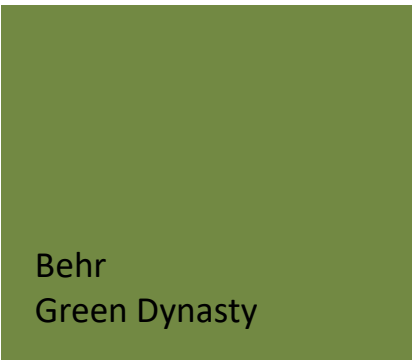
WP 1-prism in Henrik



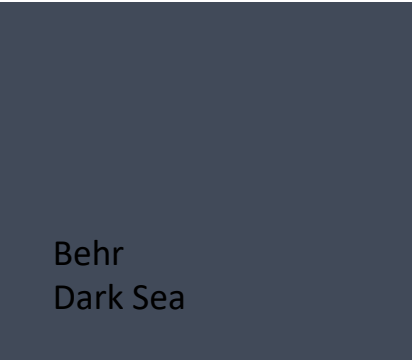
WP 2-Hester in Terracotta



PT 1



PT 2



PT 3



LVP 1-Friendship Oak Amber
By Armstrong



CPT 1-Modern Bliss
By Milliken





Sensory Alignment Room (wildcard space)

This room is available to anyone who needs a moment to re-center themselves. Use of light therapy (simulated on the back wall), cocooning oneself in a globe chair, using the OODLE stool for motion therapy or simply focusing on the paths of the swimming fish can help to reduce the stress of the moment. A living wall adds fresh oxygen to the space.



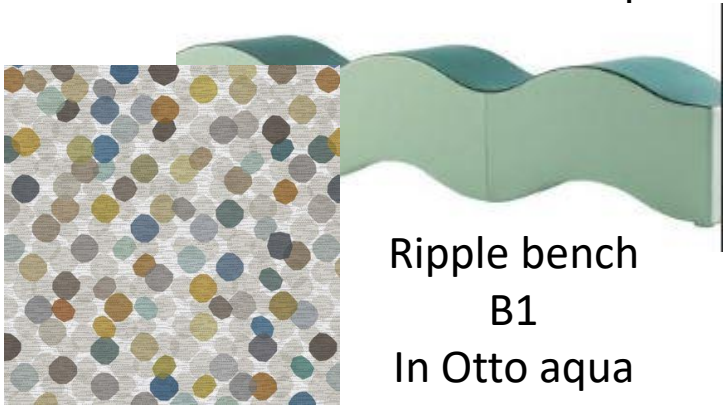
Learning Commons

This is the first area that greets students and faculty as they step off the elevators. In this area they can socialize, study, or just spend some time soaking up the sun from the wall of windows lining the space.

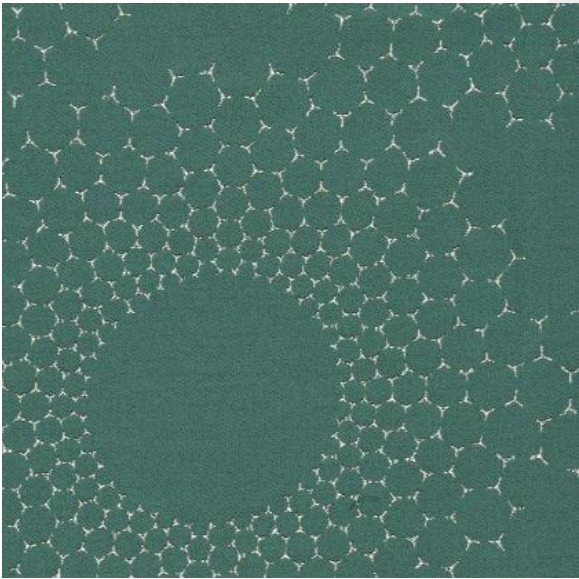
Learning Commons
&
In Between Spaces



Bolia-Vitro coffee table
T1
Marble top



Ripple bench
B1
In Otto aqua



Bivi Bench
S2
in moquette Capetown



Clipper screen
CL1
covered in nighthawk



Stump side table
T2



Campfire table
T4



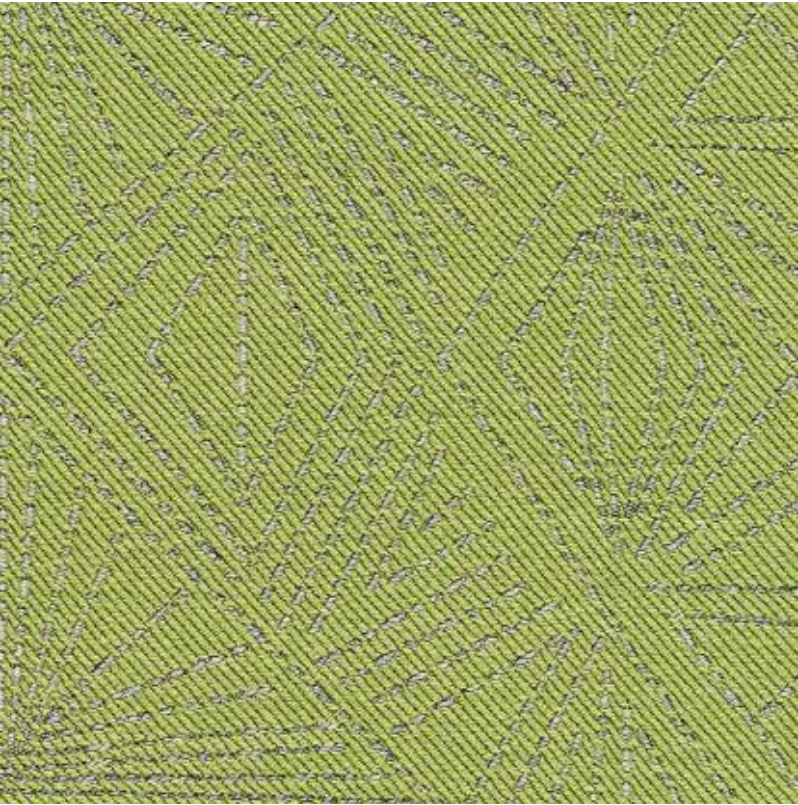
Oodle stool
C5
in green



West elm metal frame chair
C7
Sunburst in Neptune



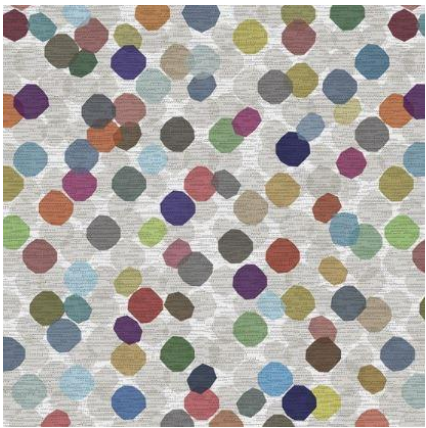
Bivi rounded sectional
S1B
starburst Green



Hourly Childcare



Bivi Rounded sectional
S1a



Floor cushion
FC1a
Otto in confetti



Beguiled by the Wild
In Hummingbird



Floor cushion
FC1b
Moquette in Tokyo



Oodle stool
C5



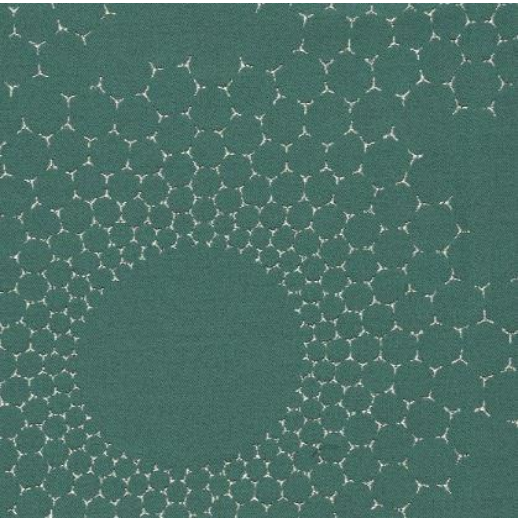
Elemental table
T5

Mother's Room

Nursing chair and fabric



West Elm
Drake mid-century motion chair
C6



Sunburst in Neptune

Sensory Alignment room



Aquarium
FT1



Light wall installation



Oodle stool
C5



Sphere chair in Starburst,
red/orange print
C4

