

NEXT ROBOTICS

SCOPE OF WORK

- o Plan and design NEXT's new 12,000 SF Research and Development Hub, as well as designing a logo to improve the company branding.
- o Create unique spaces including Reception, Wellness Room, Dedicated Team Spaces, Inclusive Design Lab & Work Cafe (Maximum square footage for each space predetermined by project program)
- o Incorporate individual and collaborative work zones that can accommodate 44 NEXT employees

CLIENT BACKGROUND: WHO IS NEXT?

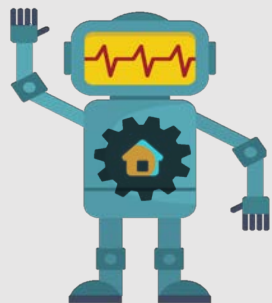
- o NEXT is a global robotics company based in Providence, Rhode Island. NEXT creates electronics and appliances that are designed to help their customers in everyday life.

COMPANY PURPOSE/GOALS

- o Offer innovative solutions to make your life easier with intuitive and responsive controls, sleek, stylish designs, and eco-friendly features. The researchers, engineers and product designers at NEXT are working to build an ecosystem of robots and smart home devices to help consumers make their homes easier to maintain and healthier places to live.
- o Aspire to be an inclusive and diverse company that embraces all walks of life, celebrates the greatness of individuals and helping them reach their full potential.

NEXT Core Values

- **Humanity Centered**
- **Purpose Driven**
- **Foster Connections**
- **Act with Integrity & Excellence**
- **Be Authentic, Be You**
- **Think Big and Be the Next!**



LOGO & COLOR SCHEME

NEXT's signature orange and electric blue can be seen in the updated logo & throughout the new office design. The new logo is simplistic yet graphic, giving viewers a clearer vision into what NEXT does and who they are as a company.

CONCEPT STATEMENT

Inspired by a circuit motherboard, individual components (departments) work efficiently to process information, communicate, and transfer data efficiently to achieve a common goal. An emphasis will be placed on comfort and control over the work environment, so staff members can feel supported and secure while in the office. The creation and separation of different personal and collaborative zones will encourage collaboration as well as improve employee engagement and efficiency.

To help reflect the brand, the design will incorporate the repetition of NEXT's signature colors, geometric shapes, and graphic patterns that are reminiscent of robotics (gears, circuits, etc.)

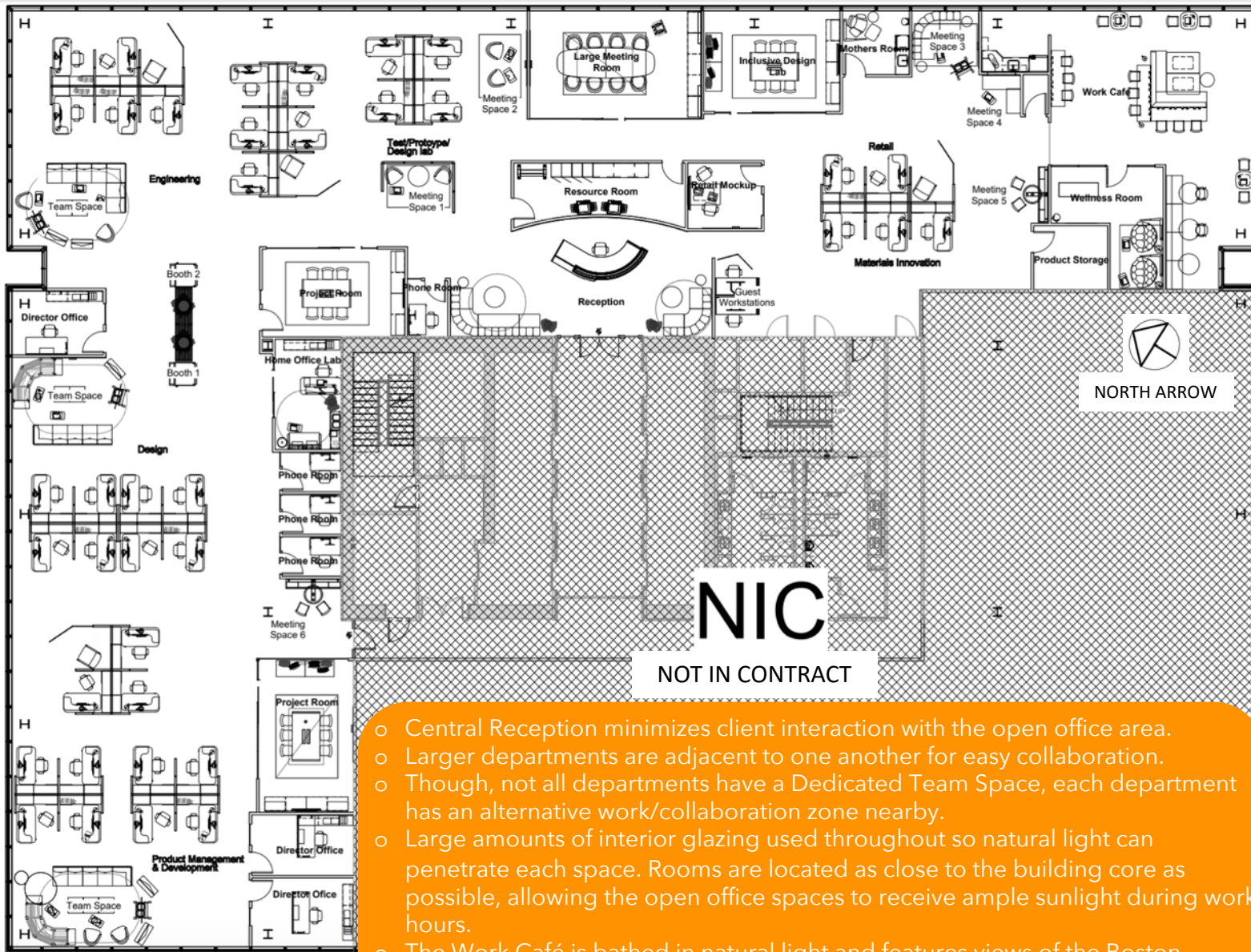
NEXT is committed to being a collaborative and team-based organization, and all of this is incorporated with hopes to continue NEXT's discovery process through technological exploration to foster innovation that provides practical and valuable robot products for the home.



LOCATION: 101 Seaport Blvd Boston, MA 02210

The NEXT office is located on the 6th floor of a multi-tenant building in the Seaport district of South Boston. It is within walking distance to the Boston Harbor, and it is centered between the popular Fan Pier Park neighborhood and the Ted Williams tunnel.

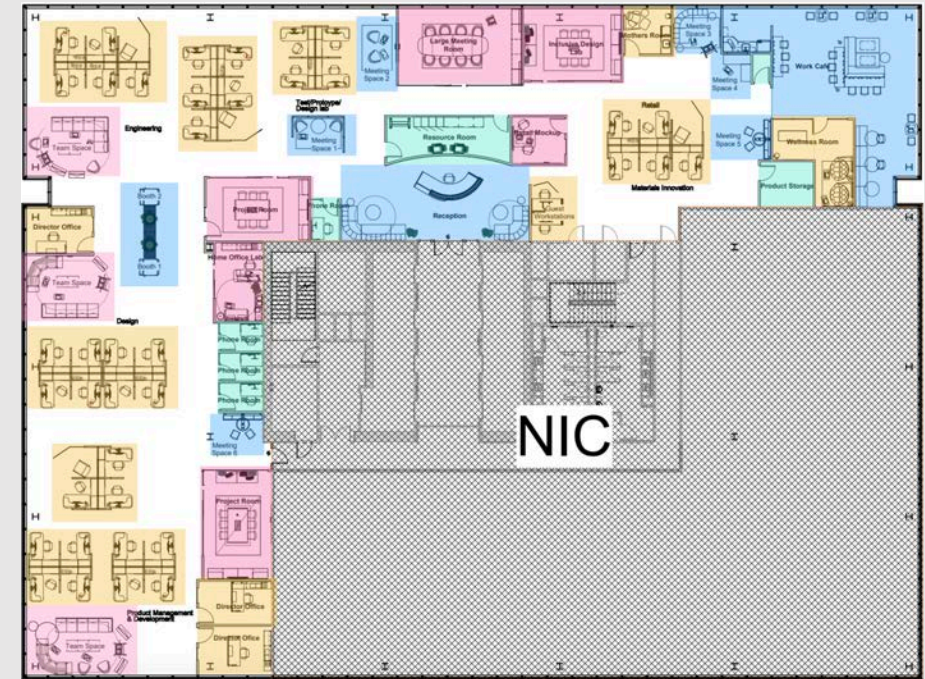
FLOORPLAN



Scale: 1/8" = 1'

- o Central Reception minimizes client interaction with the open office area.
- o Larger departments are adjacent to one another for easy collaboration.
- o Though, not all departments have a Dedicated Team Space, each department has an alternative work/collaboration zone nearby.
- o Large amounts of interior glazing used throughout so natural light can penetrate each space. Rooms are located as close to the building core as possible, allowing the open office spaces to receive ample sunlight during work hours.
- o The Work Café is bathed in natural light and features views of the Boston Seaport District.

DEFINITION OF SPACES



Personal & Focus Zones

Spaces designed for individual work or where additional privacy is necessary

(Employee Workstations, Director Offices, Mothers 's Room & Wellness Room)

Collaboration Zones

Emphasis is placed on collaboration & teamwork in these spaces

(Dedicated Team Spaces, Project Rooms, Large Meeting Room
Inclusive Design Lab & Home Office Lab)

Social Spaces

Spaces designated for chatting & social interaction

(Reception, Work Café, Chat & Go Station, Small Meeting Spaces)

Accessory Spaces

(Resource Center, Phone rooms, Product Storage)

RECEPTION

The Reception area is often a client's first look into any office space, so it should reflect the essence of the company. The reception at NEXT features a focal wall with a *circuit board wallcovering*, *geometric shapes*, and *bright colored furniture that welcomes guests* and reflects the NEXT brand.

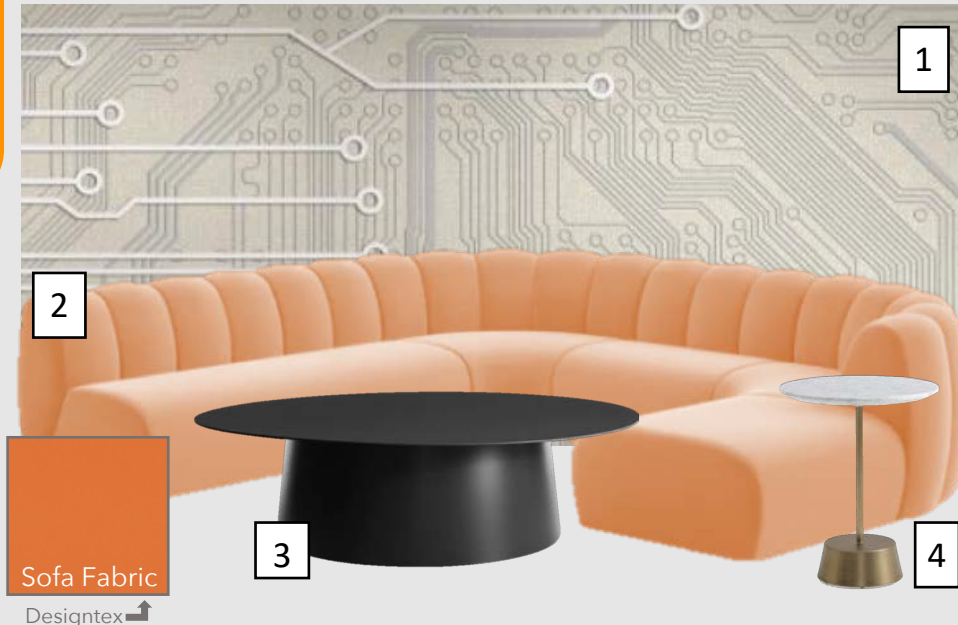


Sitting Area view from Reception Desk

Accessibility was heavily considered throughout the office design. In the Reception, an ADA compliant desk will serve all guests and assist NEXT in their goal of being a fully inclusive company

Furniture & Materials

1. Level Digital Wallcoverings: "Greige Circuit Board"
2. West Elm Work: "Belle Sofa"
3. Blu Dot: "Circula Coffee Table"
4. West Elm Work: "Maisie side Table"



Sofa Fabric
DesignTex



Reception Desk view from Main Entrance



Entrance & Reception Seating Area

Scale: 1/4" = 1'

The reception will be used as a collaborative meeting space where clients and NEXT employees can converse without entering the open office area

WORKSTATIONS



Furniture & Materials



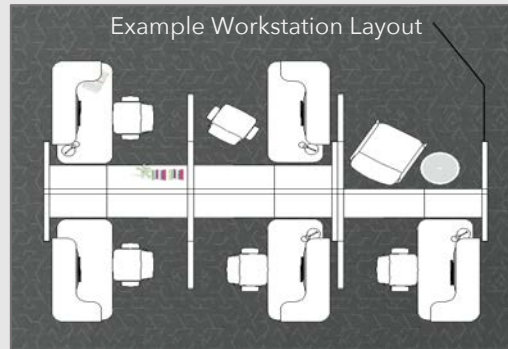
Workstation Finishes

Simple workstations with ample storage provide privacy, comfort and security for independent working

Workstation Features

- o Desks with Sit-to-Stand capabilities to accommodate various work modes
- o Task chairs are ergonomic with adjustable head and arm rests.
- o Partitions allow for employee backs to be shielded from the open office, helping to create a stronger sense of security in their workspace

Example Workstation Layout

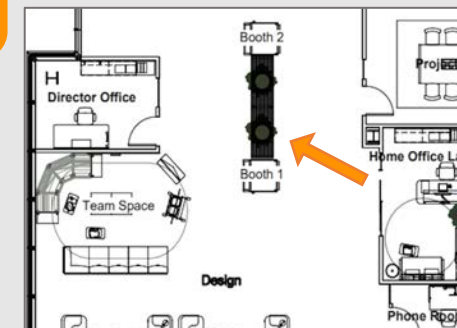


This layout is ideal for working individually, while still maintaining easy access to other team members and departments

CHAT & GO STATION



This small space in the center of the office serves as a space to sit, chat & collaborate with others, or take a personal call.

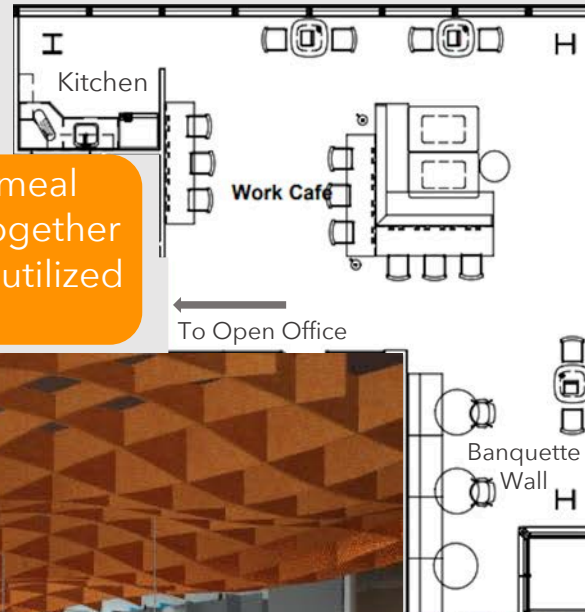


WORK CAFE

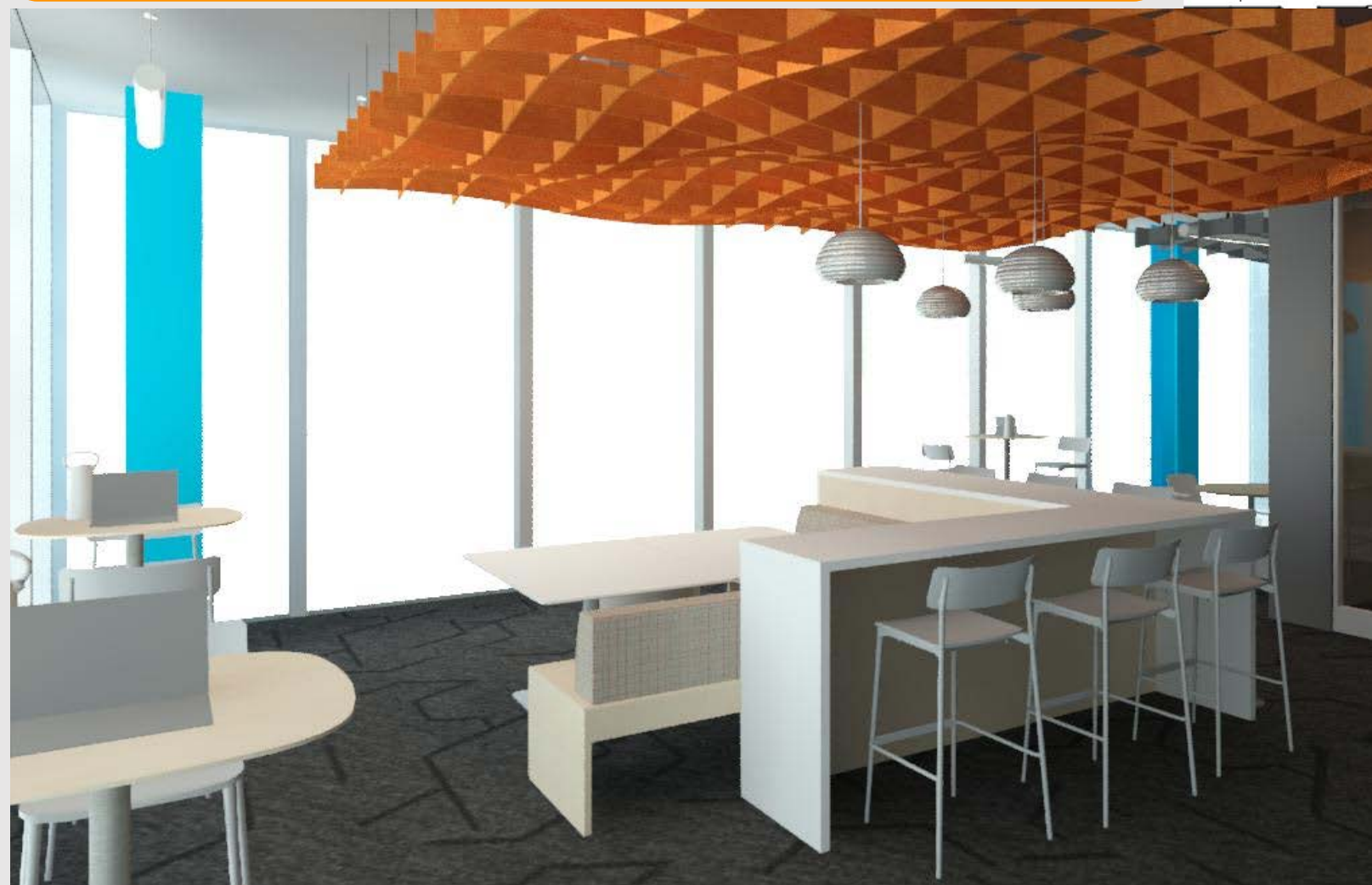


INCLUSIVE DESIGN LAB

The work café is a space for employees to decompress and enjoy a meal together during the day. At NEXT, employees are encouraged to eat together instead of alone at their desks. This space is multi-purpose and can be utilized for collaboration, independent work or company events.



A research lab dedicated to user engagement and inclusive design. This space will be used to lead user-centered research with partners and learn from traditionally excluded communities.

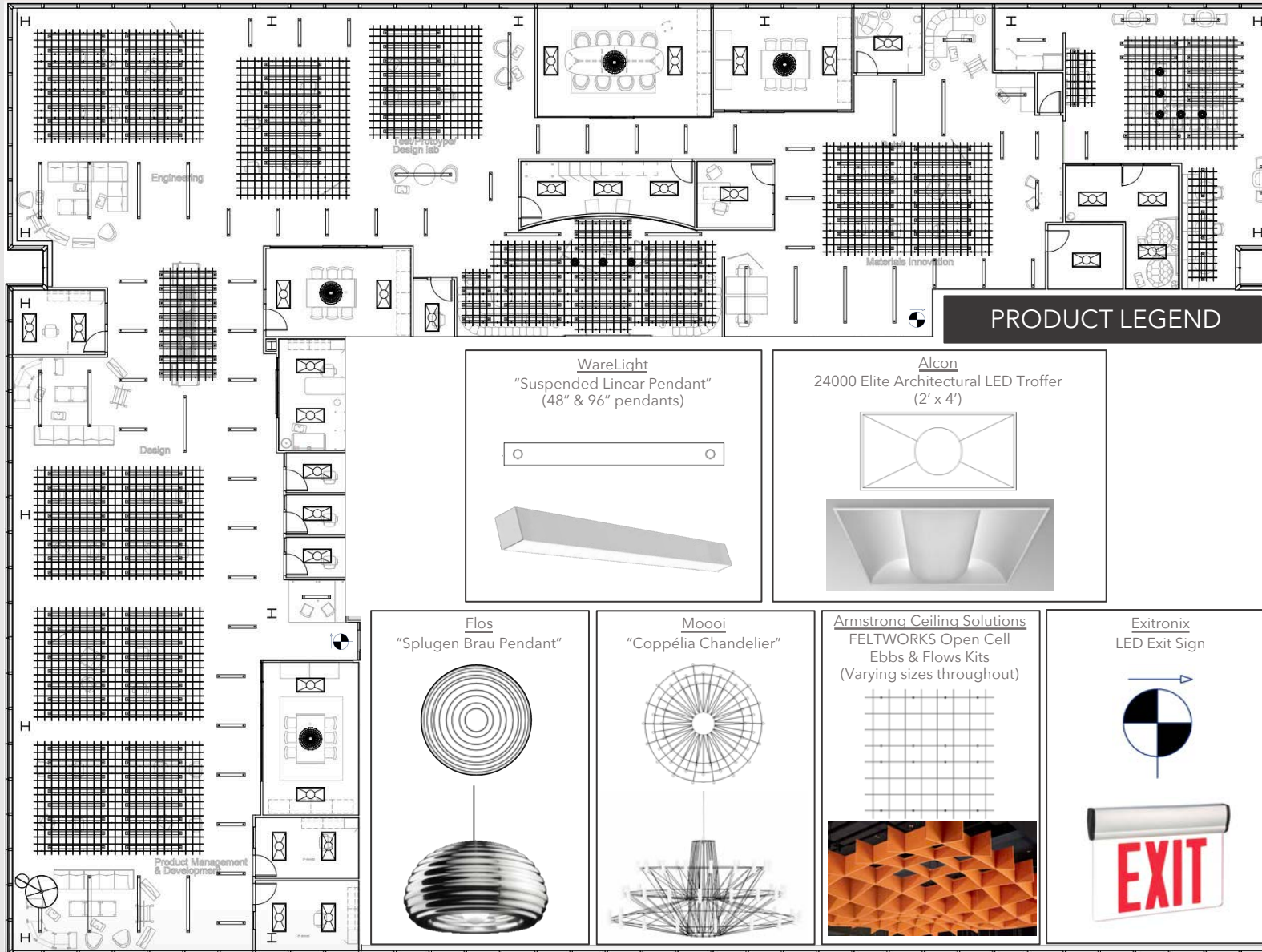


View from Kitchen Entry



View from Entry

REFLECTED CEILING PLAN

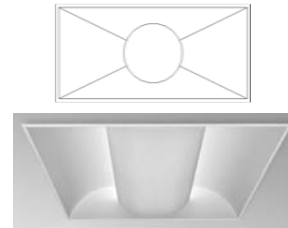


PRODUCT LEGEND

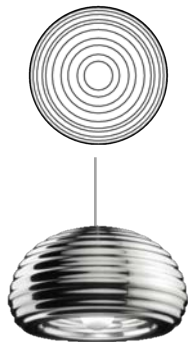
WareLight
"Suspended Linear Pendant"
(48" & 96" pendants)



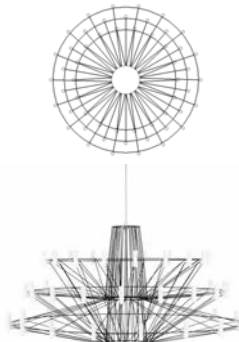
Alcon
24000 Elite Architectural LED Troffer
(2' x 4')



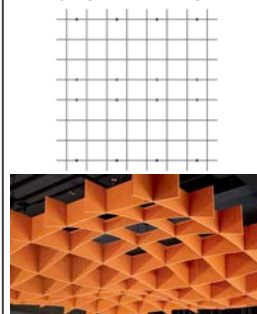
Flos
"Splügen Brau Pendant"



Moooi
"Coppélia Chandelier"



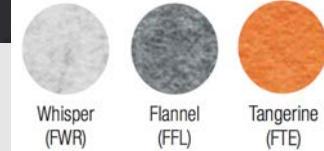
Armstrong Ceiling Solutions
FELTWORKS Open Cell
Ebbs & Flows Kits
(Varying sizes throughout)



Exitronix
LED Exit Sign



FELTWORKS Open Cell Ebbs & Flows Kits



3 colors seen throughout office space

Sustainability Profile

60%
RECYCLED
CONTENT

LEED • WELL • Living Building Challenge

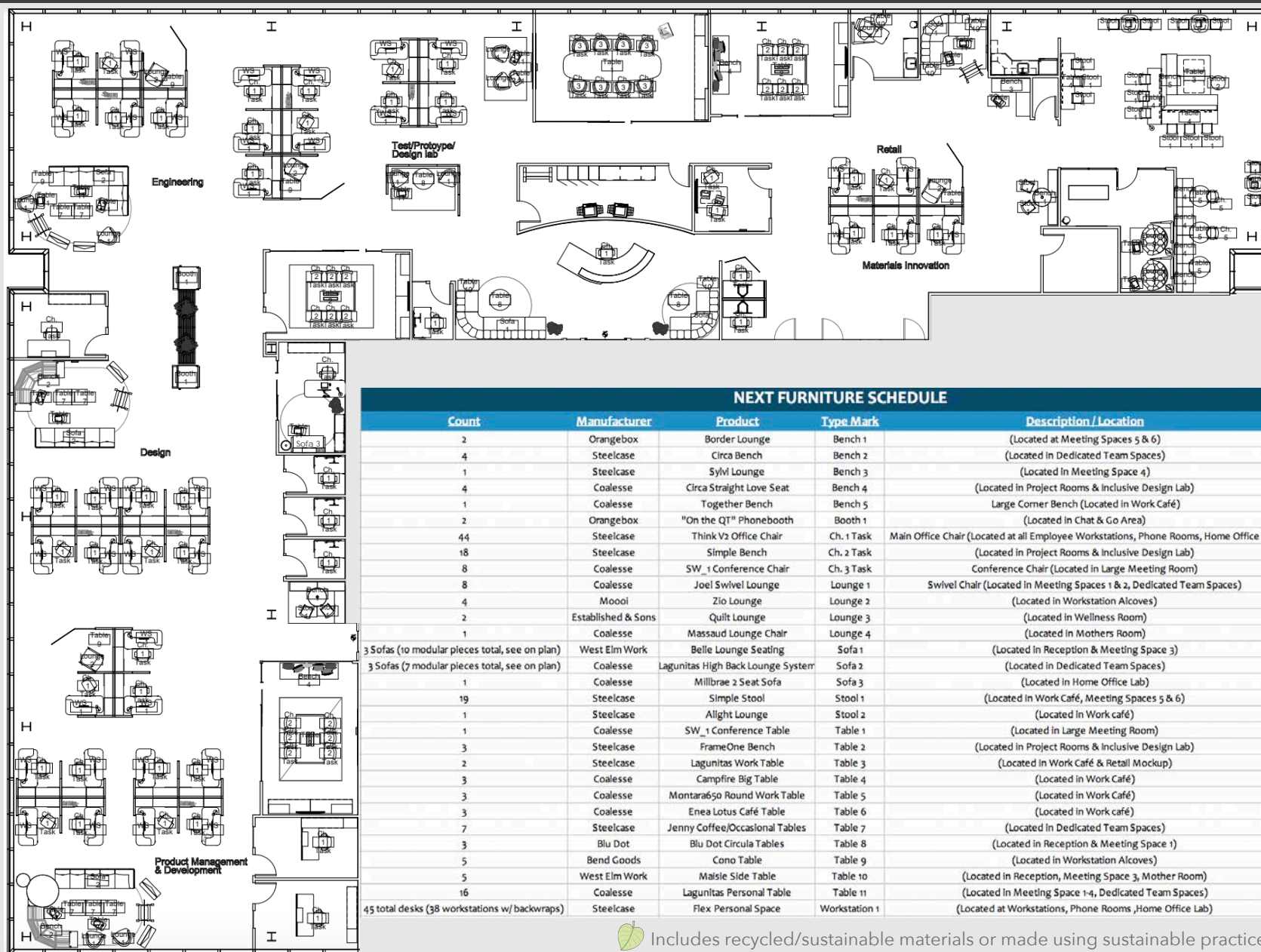
Recycled/extended producer resp.	✓ Recycled Content
Energy Management	✓ Sourcing of Raw Materials
✓ Construction Waste	✓ Material Ingredient Reporting
✓ Regional Materials	✓ Low emitting/materials
✓ Design for Flexibility	Lighting Quality
EPD	✓ Acoustics
Biobased Materials	



Declare. GREENGUARD Gold Certified

Acoustics are an important obstacle to consider when designing open office spaces. Excess noise can be a distraction and reducing it can have a major effect on efficiency in an office environment. Felt ceiling grids will reduce noise, diffuse overhead lighting, and add visual interest to the ceiling.

FURNITURE PLAN & SCHEDULE

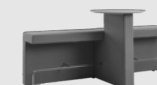


NEXT FURNITURE SCHEDULE

Count	Manufacturer	Product	Type Mark	Description / Location
2	Orangebox	Border Lounge	Bench 1	(Located at Meeting Spaces 5 & 6)
4	Steelcase	Circa Bench	Bench 2	(Located in Dedicated Team Spaces)
1	Steelcase	Sylvi Lounge	Bench 3	(Located in Meeting Space 4)
4	Coalesse	Circa Straight Love Seat	Bench 4	(Located in Project Rooms & Inclusive Design Lab)
1	Coalesse	Together Bench	Bench 5	Large Corner Bench (Located in Work Café)
2	Orangebox	"On the QT" Phonebooth	Booth 1	(Located in Chat & Go Area)
44	Think V2	Office Chair	Ch. 1 Task	Main Office Chair (Located at all Employee Workstations, Phone Rooms, Home Office Lab)
18	Steelcase	Simple Bench	Ch. 2 Task	(Located in Project Rooms & Inclusive Design Lab)
8	Coalesse	SW_1 Conference Chair	Ch. 3 Task	Conference Chair (Located in Large Meeting Room)
8	Coalesse	Joel Swivel Lounge	Lounge 1	Swivel Chair (Located in Meeting Spaces 1 & 2, Dedicated Team Spaces)
4	Moool	Zio Lounge	Lounge 2	(Located in Workstation Alcoves)
2	Established & Sons	Quilt Lounge	Lounge 3	(Located in Wellness Room)
1	Coalesse	Massaud Lounge Chair	Lounge 4	(Located in Mothers Room)
3 Sofas (10 modular pieces total, see on plan)	West Elm Work	Belle Lounge Seating	Sofa 1	(Located in Reception & Meeting Space 3)
3 Sofas (7 modular pieces total, see on plan)	Coalesse	Lagunitas High Back Lounge System	Sofa 2	(Located in Dedicated Team Spaces)
1	Coalesse	Millbrae 2 Seat Sofa	Sofa 3	(Located in Home Office Lab)
19	Steelcase	Simple Stool	Stool 1	(Located in Work Café, Meeting Spaces 5 & 6)
1	Steelcase	Allight Lounge	Stool 2	(Located in Work Café)
1	Coalesse	SW_1 Conference Table	Table 1	(Located in Large Meeting Room)
3	Steelcase	FrameOne Bench	Table 2	(Located in Project Rooms & Inclusive Design Lab)
2	Steelcase	Lagunitas Work Table	Table 3	(Located in Work Café & Retail Mockup)
3	Coalesse	Campfire Big Table	Table 4	(Located in Work Café)
3	Coalesse	Montara650 Round Work Table	Table 5	(Located in Work Café)
3	Coalesse	Enea Lotus Café Table	Table 6	(Located in Work Café)
7	Steelcase	Jenny Coffee/Occasional Tables	Table 7	(Located in Dedicated Team Spaces)
3	Blu Dot	Blu Dot Circula Tables	Table 8	(Located in Reception & Meeting Space 1)
5	Bend Goods	Cono Table	Table 9	(Located in Workstation Alcoves)
5	West Elm Work	Maisie Side Table	Table 10	(Located in Reception, Meeting Space 3, Mother Room)
16	Coalesse	Lagunitas Personal Table	Table 11	(Located in Meeting Space 1-4, Dedicated Team Spaces)
45 total desks (38 workstations w/ backwraps)	Steelcase	Flex Personal Space	Workstation 1	(Located at Workstations, Phone Rooms, Home Office Lab)



Includes recycled/sustainable materials or made using sustainable practices



Bench 1



Bench 2



Bench 3



Bench 4



Bench 5



Booth 1



Chair 1 Task



Chair 2 Task



Chair 3 Task



Lounge 1



Lounge 2



Lounge 3



Lounge 4



Sofa 1



Sofa 2



Sofa 3



Stool 1



Stool 2



Table 1



Table 2



Table 3



Table 4



Table 5



Table 6



Table 7



Table 8

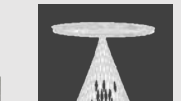


Table 9



Table 10



Table 11

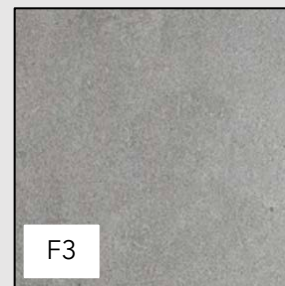
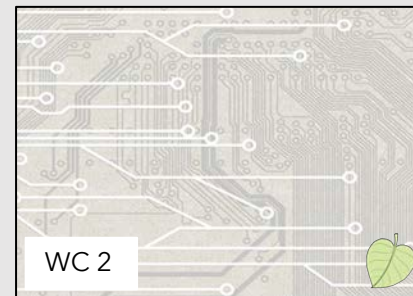
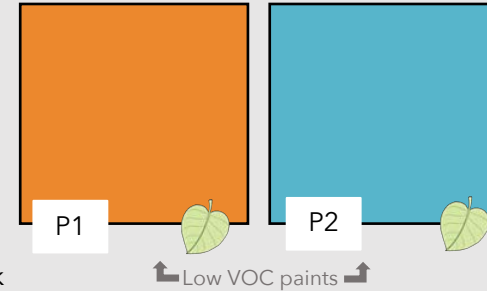


Workstation 1

FINISH PLAN & SCHEDULE



Painted steel columns in NEXT signature colors throughout for a **Colorful** & **Industrial** look



NEXT FINISH SCHEDULE				
MATERIAL	LABEL	MANUFACTURER	NAME	MODEL #
PAINT				
	P1	Sherwin Williams	"Carnival"	SW 6892
	P2	Sherwin Williams	"Fountain"	SW 6787
WALLCOVERING				
	WC1	Level Digital Wallcoverings	Circuit Board - "Greige"	Design #: L60301
	WC2	Level Digital Wallcoverings	Changing Lanes - "Citrus"	Design #: L60106
FLOORING				
	F1	Forbo	Flotex Triad Planks - "Steel"	#131007
	F2	Forbo	Flotex Triad Planks - "Embossed Zinc"	#121001
	F3	N/A	Polished Concrete	N/A
WALL SYSTEMS				
	WS1	Steelcase	V.I.A Modular Wall System	N/A
	WS2	Steelcase	Steelcase Privacy Wall System	N/A

Designtex Fabrics

- Low-emitting products: better for indoor air quality and well-being
- Products that contribute to LEED and WELL ratings
- Large selection of products made in the USA.



Includes recycled/sustainable materials or made using sustainable practices

